



COMPASS

Queens Luxury Report

August 11 - 17, 2025, Residential Contracts \$1.25M+

Photo: [12-16 30th Ave, Unit 201](#)

The Queens luxury real estate market, defined as all properties priced \$1.25M and above, saw 18 contracts signed this week, made up of 6 condos, and 12 houses. The previous week saw 11 deals. For more information or data, please reach out to a Compass agent.

\$1,679,167

Average Asking Price

\$1,649,500

Median Asking Price

\$1,014

Average PPSF

1%

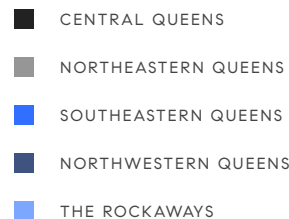
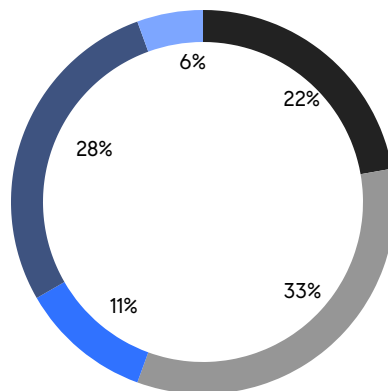
Average Discount

\$30,224,999

Total Volume

58

Average Days On Market



6

Condo Deal(s)

0

Co-op Deal(s)

12

Single-Family Deal(s)

\$1,532,667

Average Asking Price

\$0

Average Asking Price

\$1,752,417

Average Asking Price

\$1,425,500

Median Asking Price

\$0

Median Asking Price

\$1,719,000

Median Asking Price

\$1,434

Average PPSF

\$785

Average PPSF

1,105

Average SqFt

2,328

Average SqFt



110-39 67th Drive

Forest Hills

Contract Signed

Type	House	Price	\$2,359,000	Sq. Ft.	2,184	Beds	4
DOM	8	Initial	\$2,359,000	PPSF	\$1,081	Baths	3



70-20 Harrow Street

Forest Hills

Contract Signed

Type	House	Price	\$2,198,000	Sq. Ft.	1,827	Beds	4
DOM	26	Initial	\$2,198,000	PPSF	\$1,204	Baths	2

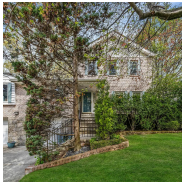


163-66 23rd Avenue

Clearview

Contract Signed

Type	House	Price	\$2,080,000	Sq. Ft.	2,700	Beds	4
DOM	30	Initial	\$2,080,000	PPSF	\$771	Baths	2

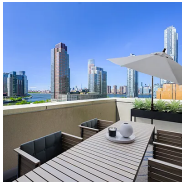


196-25 McLaughlin Avenue

Holliswood Jamaica

Contract Signed

Type	House	Price	\$1,899,000	Sq. Ft.	3,216	Beds	6
DOM	106	Initial	\$2,300,000	PPSF	\$591	Baths	4

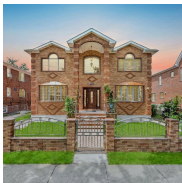


5-49 Borden Avenue, Unit 9K

Long Island City

Contract Signed

Type	Condo	Price	\$1,870,000	Sq. Ft.	1,220	Beds	3
DOM	75	Initial	\$1,898,000	PPSF	\$1,533	Baths	2



8418 263rd Street

Floral Park

Contract Signed

Type	House	Price	\$1,799,999	Sq. Ft.	2,996	Beds	5
DOM	38	Initial	\$1,799,999	PPSF	\$601	Baths	4

Compass is a licensed real estate broker and abides by Equal Housing Opportunity laws. All material presented herein is intended for informational purposes only. Information is compiled from sources deemed reliable but is subject to errors, omissions, changes in price, condition, sale, or withdrawal without notice. No statement is made as to the accuracy of any description. All measurements and square footages are approximate. This is not intended to solicit property already listed. Nothing herein shall be construed as legal, accounting or other professional advice outside the realm of real estate brokerage.

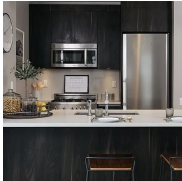


90-01 68th Avenue

Forest Hills

Contract Signed

Type	House	Price	\$1,788,000	Sq. Ft.	1,840	Beds	3
DOM	33	Initial	\$1,788,000	PPSF	\$972	Baths	2.5

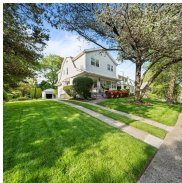


13-33 Jackson Avenue, Unit 7G

Long Island City

Contract Signed

Type	Condo	Price	\$1,775,000	Sq. Ft.	1,187	Beds	3
DOM	118	Initial	\$1,775,000	PPSF	\$1,496	Baths	2

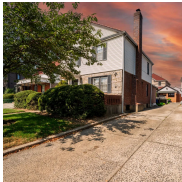


173-07 Croydon Road

Jamaica Estates

Contract Signed

Type	House	Price	\$1,650,000	Sq. Ft.	-	Beds	3
DOM	89	Initial	\$1,650,000	PPSF	-	Baths	4



75-73 179th Street

Utopia

Contract Signed

Type	House	Price	\$1,649,000	Sq. Ft.	2,280	Beds	5
DOM	10	Initial	\$1,649,000	PPSF	\$724	Baths	3

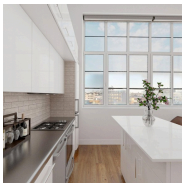


148-03 9th Avenue

Whitestone

Contract Signed

Type	House	Price	\$1,549,000	Sq. Ft.	2,400	Beds	4
DOM	29	Initial	\$1,549,000	PPSF	\$646	Baths	2.5



27-28 Thomson Avenue, Unit S415

Long Island City

Contract Signed

Type	Condo	Price	\$1,465,000	Sq. Ft.	1,321	Beds	2
DOM	144	Initial	\$1,465,000	PPSF	\$1,109	Baths	2

Compass is a licensed real estate broker and abides by Equal Housing Opportunity laws. All material presented herein is intended for informational purposes only. Information is compiled from sources deemed reliable but is subject to errors, omissions, changes in price, condition, sale, or withdrawal without notice. No statement is made as to the accuracy of any description. All measurements and square footages are approximate. This is not intended to solicit property already listed. Nothing herein shall be construed as legal, accounting or other professional advice outside the realm of real estate brokerage.



117-13 Rockaway Beach Boulevard

Rockaway Park

Contract Signed

Type	House	Price	\$1,399,000	Sq. Ft.	2,575	Beds	4
DOM	29	Initial	\$1,599,000	PPSF	\$544	Baths	4

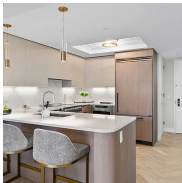


45-26 Zion Street

Little Neck

Contract Signed

Type	House	Price	\$1,388,000	Sq. Ft.	1,656	Beds	3
DOM	8	Initial	\$1,388,000	PPSF	\$839	Baths	2



78-29 Austin Street, Unit 308

Forest Hills

Contract Signed

Type	Condo	Price	\$1,386,000	Sq. Ft.	1,130	Beds	2
DOM	-	Initial	\$1,386,000	PPSF	\$1,227	Baths	2

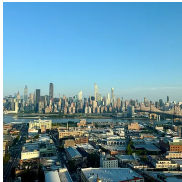


5-19 Borden Avenue, Unit 2E

Long Island City

Contract Signed

Type	Condo	Price	\$1,350,000	Sq. Ft.	1,100	Beds	2
DOM	64	Initial	\$1,350,000	PPSF	\$1,228	Baths	2

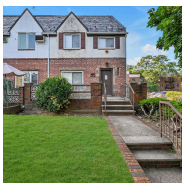


3 Court Square, Unit 3212

Long Island City

Contract Signed

Type	Condo	Price	\$1,350,000	Sq. Ft.	672	Beds	1
DOM	117	Initial	\$1,350,000	PPSF	\$2,009	Baths	1



147-33 72nd Drive

Kew Gardens Hills

Contract Signed

Type	House	Price	\$1,270,000	Sq. Ft.	1,925	Beds	4
DOM	53	Initial	\$1,275,000	PPSF	\$660	Baths	3

Compass is a licensed real estate broker and abides by Equal Housing Opportunity laws. All material presented herein is intended for informational purposes only. Information is compiled from sources deemed reliable but is subject to errors, omissions, changes in price, condition, sale, or withdrawal without notice. No statement is made as to the accuracy of any description. All measurements and square footages are approximate. This is not intended to solicit property already listed. Nothing herein shall be construed as legal, accounting or other professional advice outside the realm of real estate brokerage.